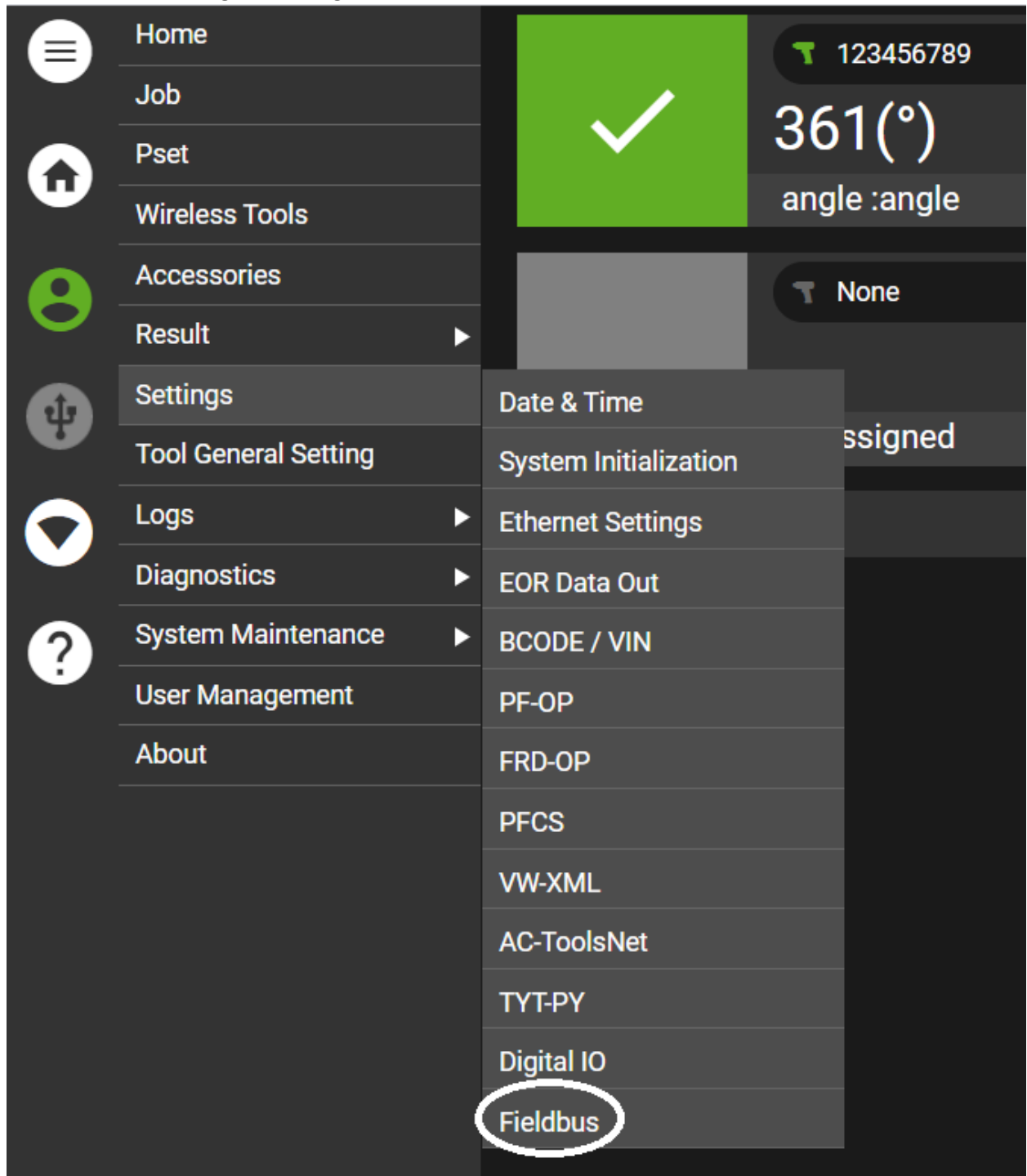
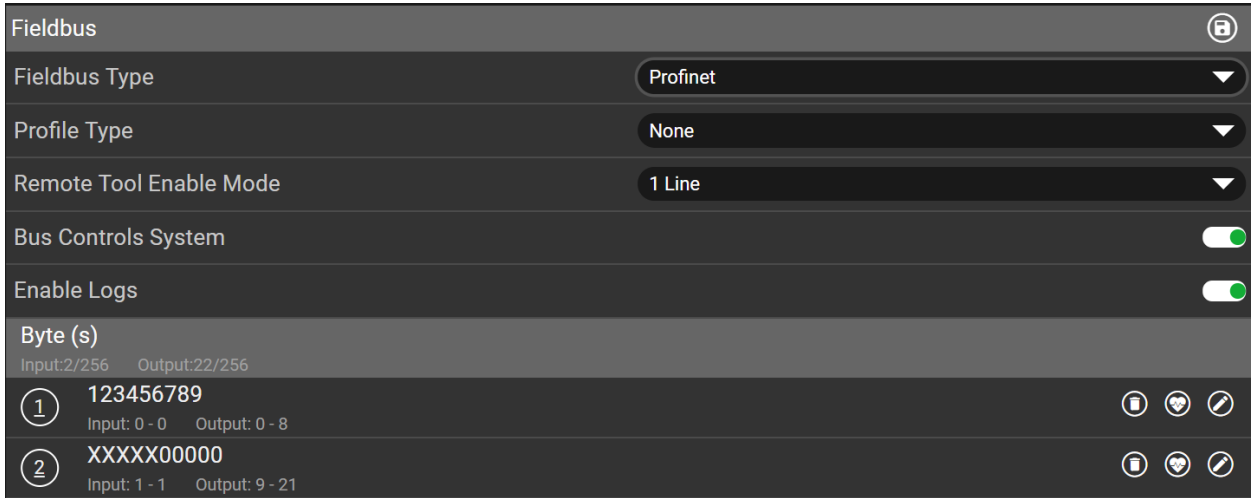


1. From the Main Menu go to Settings->Fieldbus.

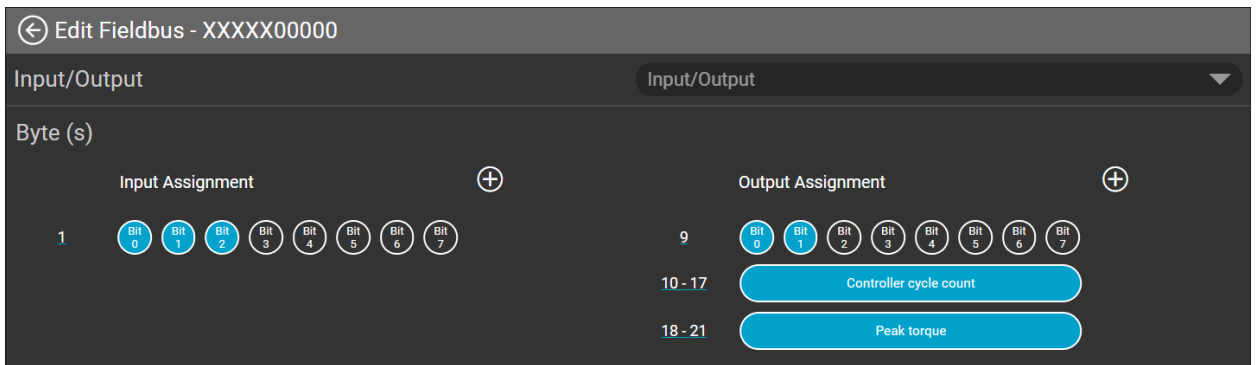
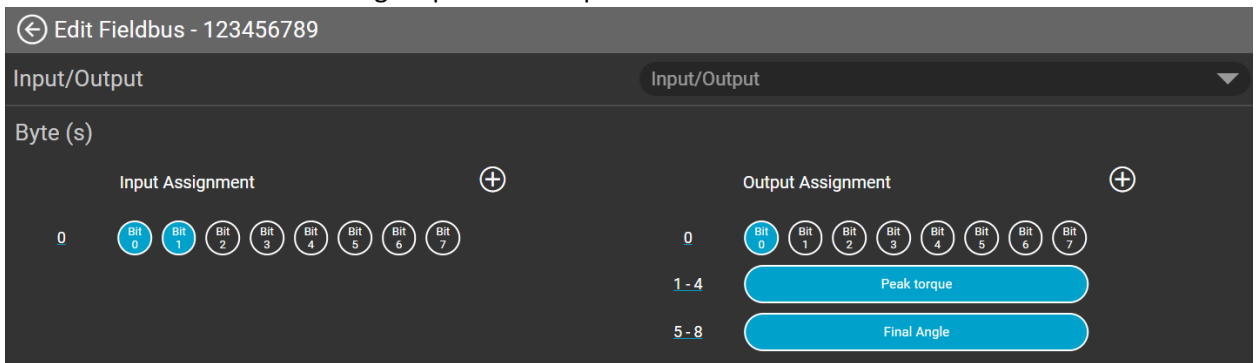


2. Fieldbus Type - Select Profinet.
3. Profile Type - Select None if using Custom Bit Mapping.
 - a. If only using one tool and you require the IC-PCM mapping, select IC-PCM Profile.
4. Remote Tool Enable Mode - Select how the remote enable is configured.
 - a. None – No input is being used to enable/disable the tool.
 - b. 1-Line – Tool is enabled when input is high. Tool is disabled when input is low.

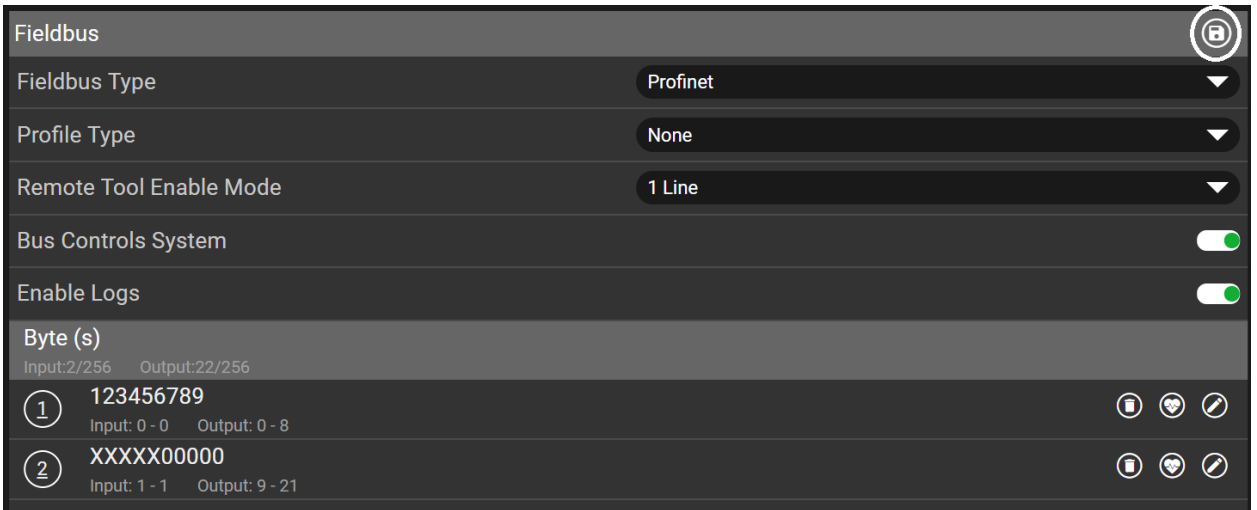
- c. 2-Line – Pulse the enable input to enable the tool. Pulse the disable input to disable the tool.
- 5. Bus Control System - Enable if using inputs to control system behavior.
- 6. Enable Logs – Enable to capture logs for all fieldbus events. This is helpful during initial communication setup.
- 7. The total number of Input and Output bytes allowed is 256.
- 8. All paired tools are listed on the screen.



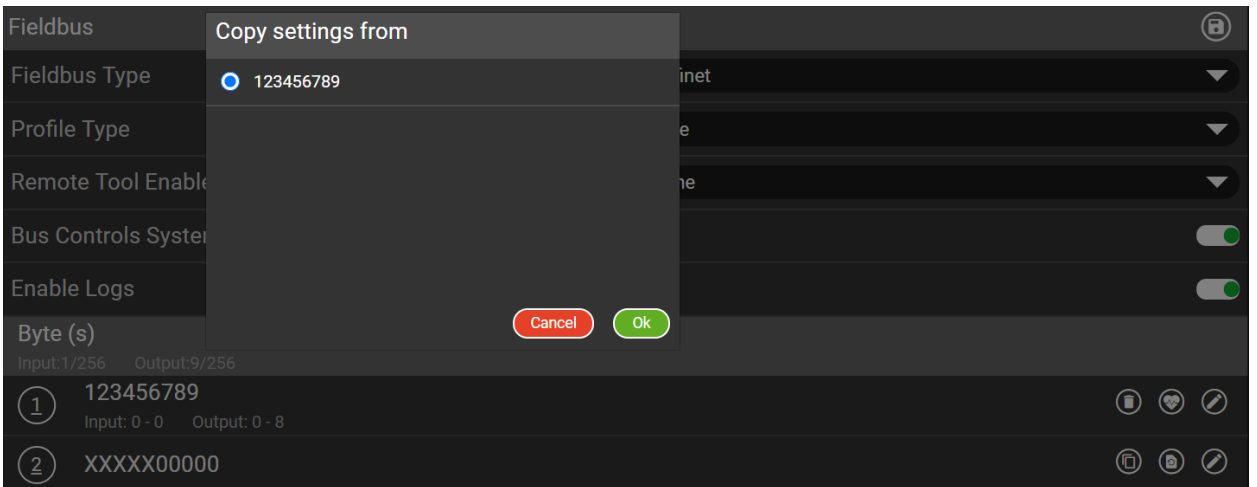
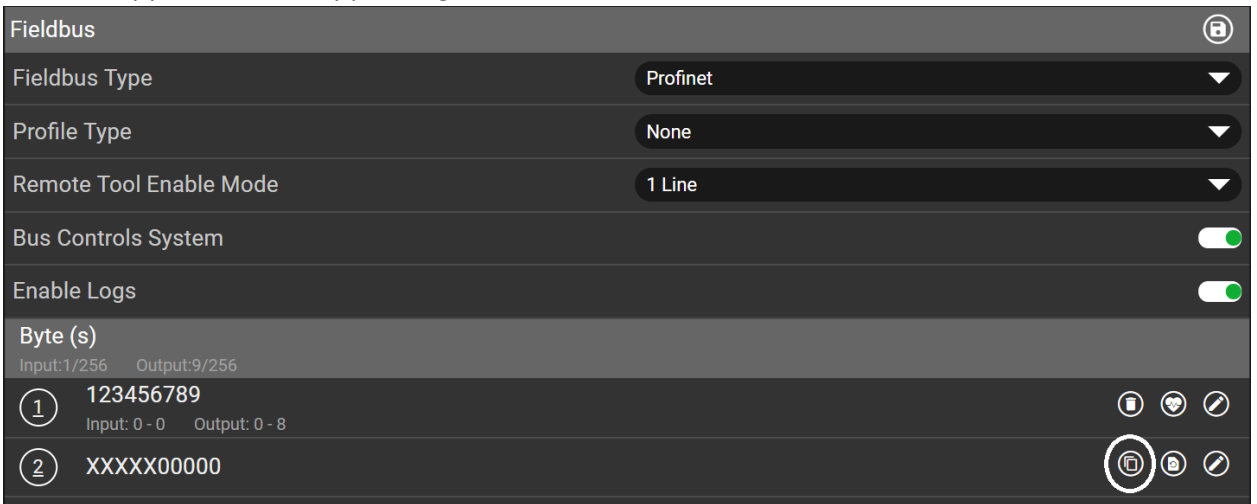
- 9. Select the desired tool and assign inputs and outputs.



- 10. When complete select the Save icon.



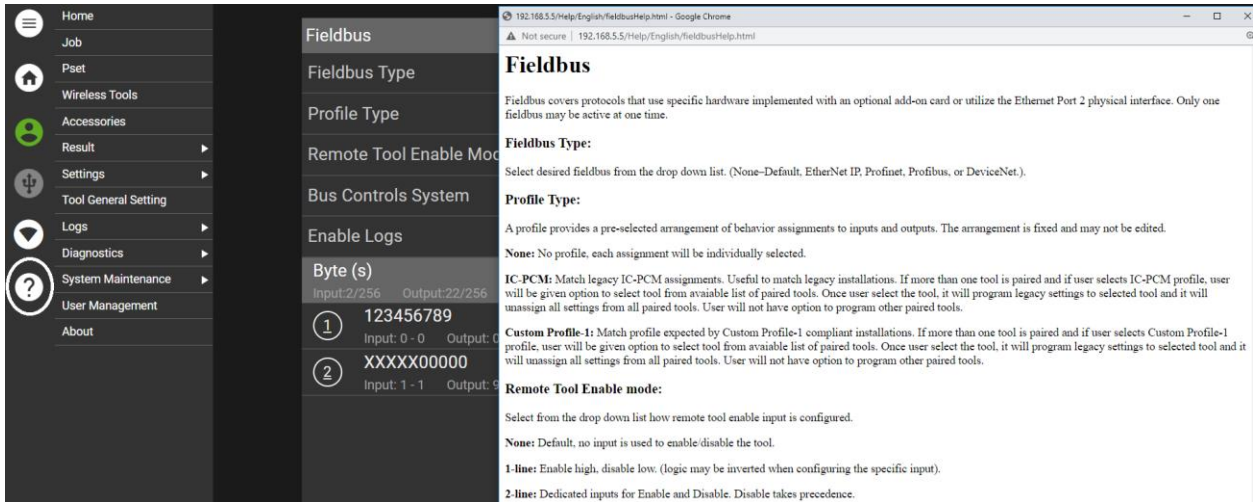
11. Use the Copy function to copy settings from one tool to another.



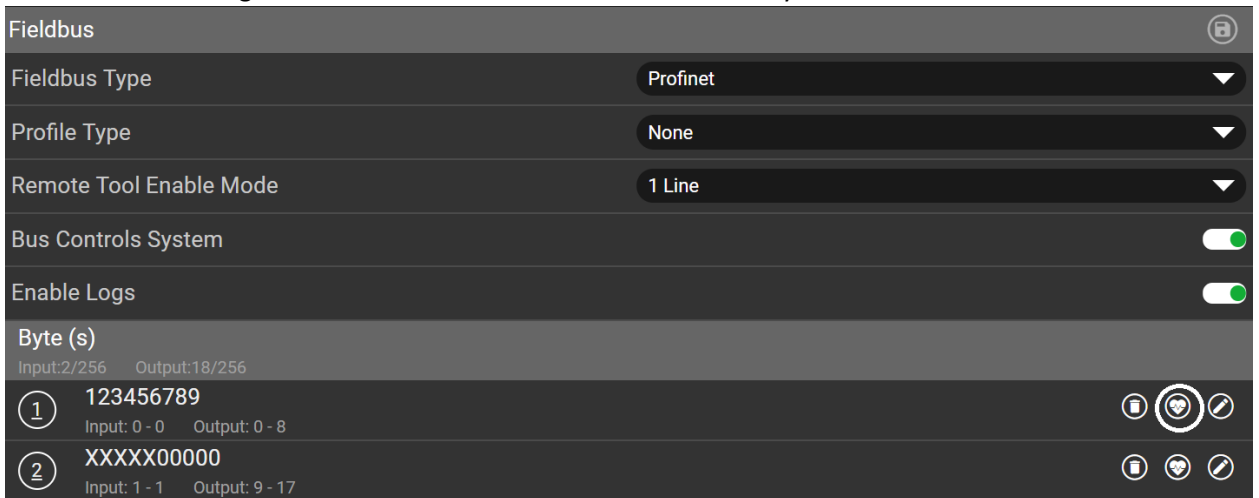
12. Follow the Profinet Siemens Setup Procedure for assigning the appropriate network settings for Port 2 on the controller.

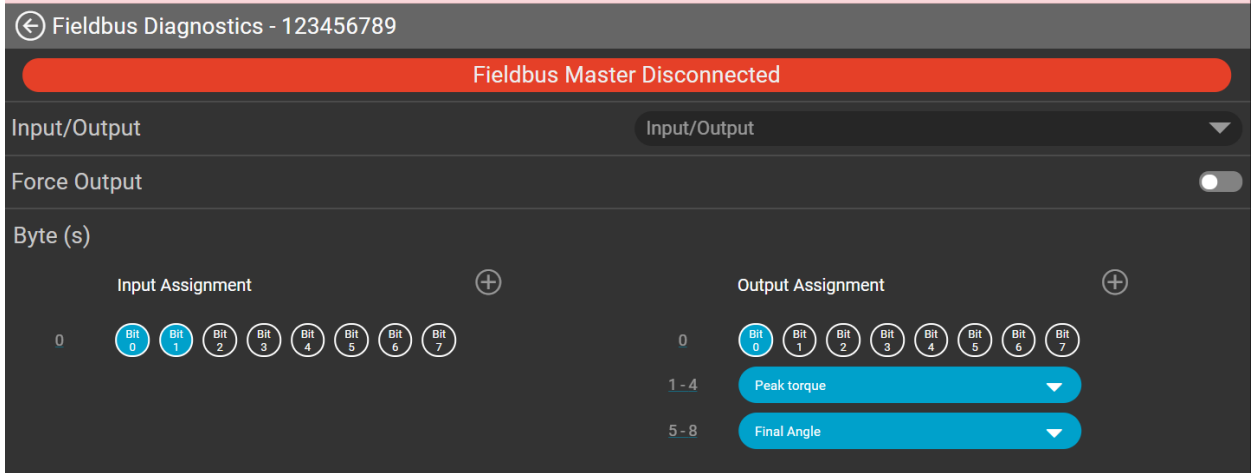
Note: Port 1 is used for accessing the controller web browser and should be on a different subnet than Port 2.

13. The onboard Help Menu has a complete list of definitions for all Ethernet and Fieldbus settings.



14. You can use the Diagnostic Mode to confirm Fieldbus functionality.





Note: The PLC and controller must be on similar timing. The INSIGHT controller expects data no faster than every 50 ms. The customer PLC should have cycle rates no faster than 100 ms or communications issues could arise.