




## Setting up an MTC controller and QX tool for the first time

1. Turn on the controller.
2. Once the controller is fully booted, log in with admin/Ingersoll.
3. Go to the About screen.
4. Check the application version.

Controller Information		Controller Version Information	
Model Number		Application Version	100.1.2.12
Serial Number		Database Version	1.0.0
Radio MAC Address	00:12:4B:00:03:A1:52:6A	OS Version	1.0.0
SATA ID	511190717025000030	Radio Version	02.06

5. From our Help Center confirm the latest version.
  - a. <https://irtoolhelp.ingersollrand.com/hc/en-us/articles/8760132010643-Firmware-Version-100-1-2-23-for-INSIGHTqcx-latest-release->
6. If the controller is not at the latest version, follow the steps outlined in the Help Center article to update the controller.
7. Once the controller is updated, plug in the QX tool to the controller using the supplied USB cable.
8. If the tool firmware has to be updated you will see a message similar to below:

### Tool Update

#	Current version	Recommended version	Update
Display	120.2.2.1	120.4.2.1	
MCE	3.6.1.34	3.6.1.45	
Radio	0.0.0.2	—	

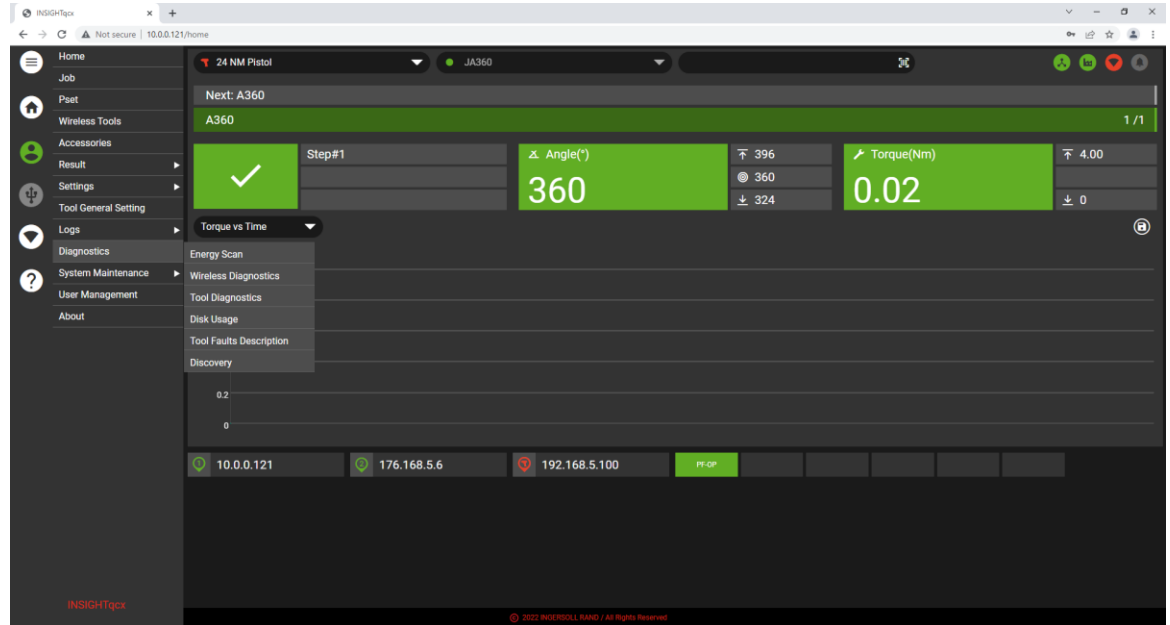
**⚠ Version mismatch found. Its recommended to update tool.  
Would you like to update?**

Cancel

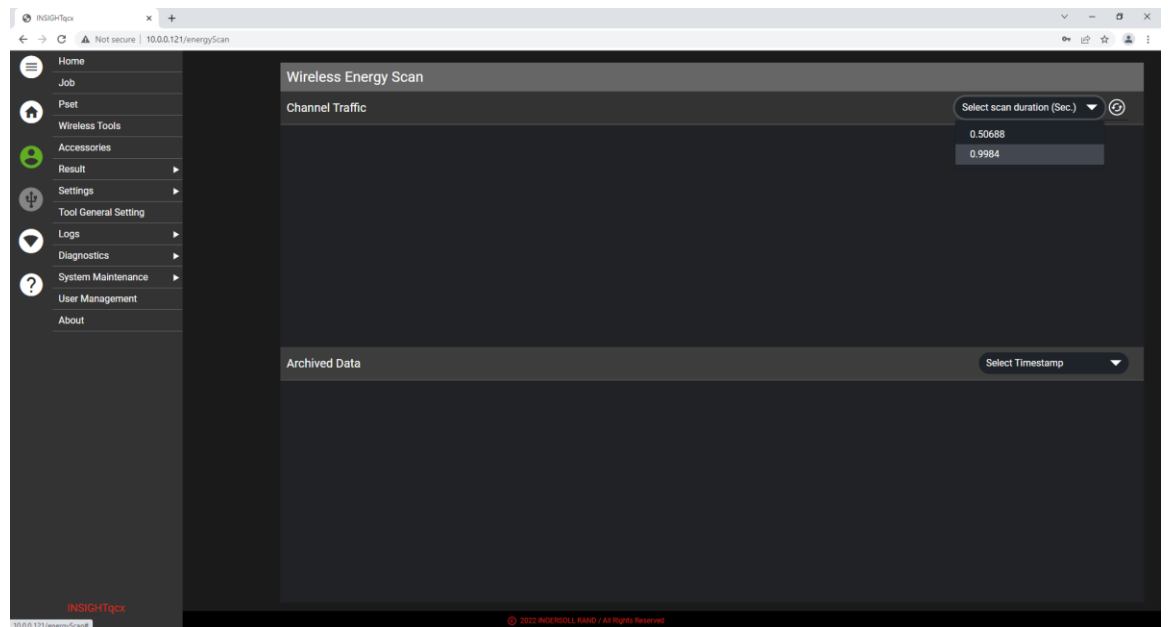
9. Follow all on screen instructions to update the tool firmware.

## Setting up an MTC controller and QX tool for the first time

- a. See link for details: <https://irtoolhelp.ingersollrand.com/hc/en-us/articles/5120212430739-Update-QX-and-QX-Connect-tool-firmware-using-an-MTC-controller>
10. Once the tool is updated, perform a Wireless Energy Scan.
- a. Navigate to the Diagnostics->Energy Scan screen:

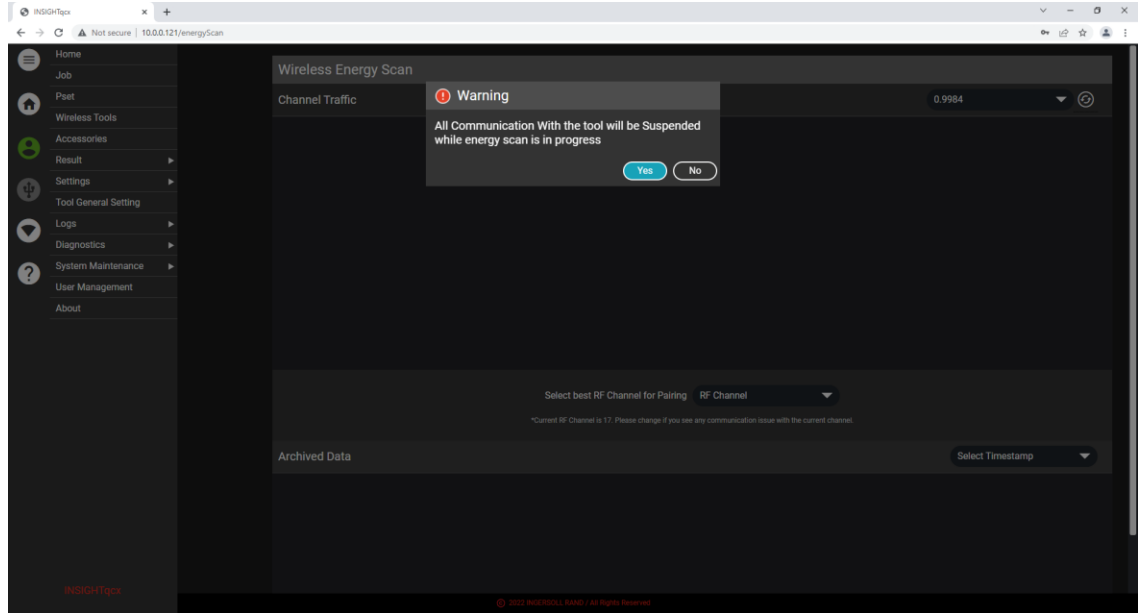


- b. Select scan duration of 0.9984

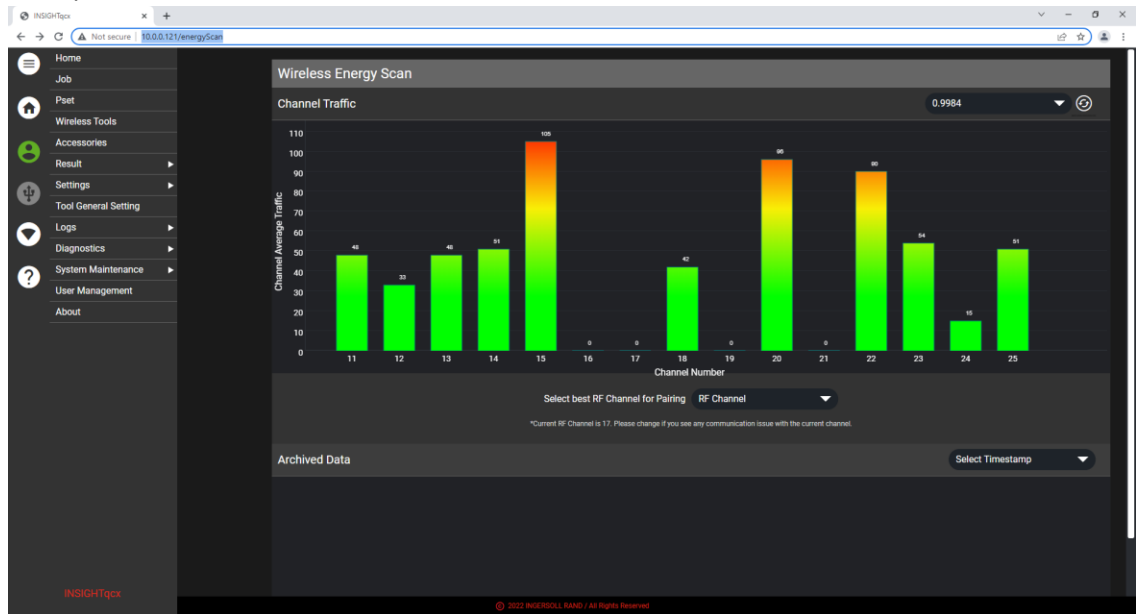


- c. The energy scan disables communications with the tool for the duration of the scan. It is not recommended to perform the energy scan while production is running. Press the Yes button to initiate the scan.

## Setting up an MTC controller and QX tool for the first time



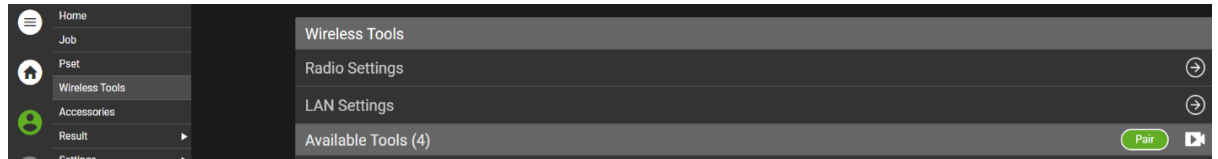
- d. After the scan completes, a table will show with the energy levels observed on all channels. Channel 25 is used for pairing and cannot be selected. Usually channels 15 and 20 are the quietest. On the screenshot below, these channels are high as there are controllers and tools using these channels nearby. Channel 17 will be chosen for this example.



### 11. Pairing the tool to the controller.

- a. From the touch screen or web browser, select Wireless Tools.

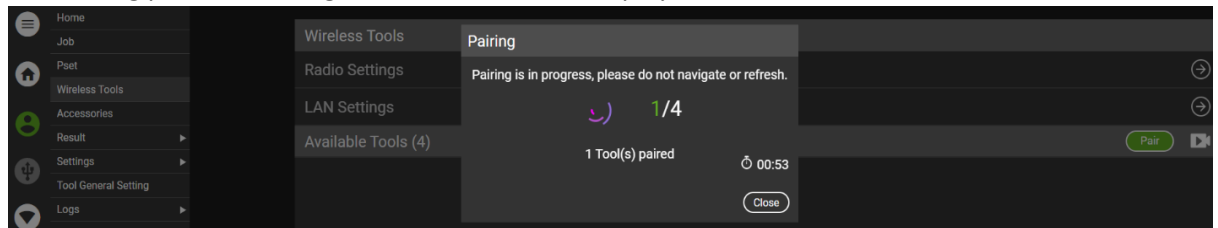
## Setting up an MTC controller and QX tool for the first time



- b. For QX Connect Series tools (display version 120.x.x.x) select the controller icon from the tool keypad.

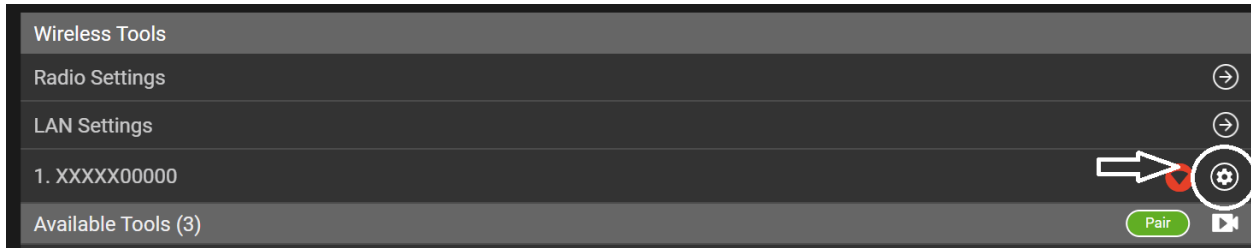


- c. From the controller touch screen or the web browser, select the Pair button.  
d. The Pairing process will begin, and status will be displayed on screen.

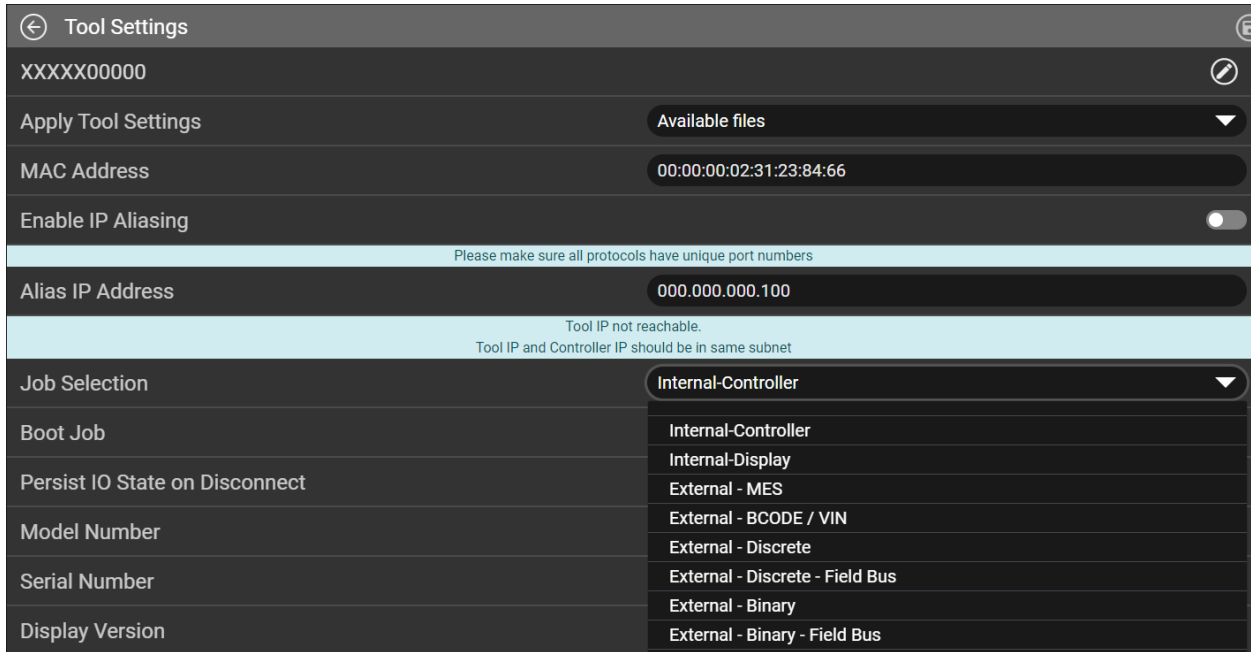


- e. In the above example one tool paired successfully to the controller.  
f. For legacy QX Tools (display version 200.x.x.x), to pair the tool, press the check button and left arrow button simultaneously.  
g. Once all tools are paired, you can program the necessary Psets and Jobs.  
    1. See link: <https://irtoolhelp.ingersollrand.com/hc/en-us/articles/8577713302163-Create-a-Pset-and-Job-using-an-MTC-Controller>  
h. To run the tool, confirm the Job Selection Mode.  
    1. Go to Wireless Tools.  
    2. Select the Tool Settings icon.

## Setting up an MTC controller and QX tool for the first time



3. Select the desired Job Selection Mode.



i. Select the desired Job and the tool should run.