

Before performing any service always follow applicable safety precautions. Consult company safety manual or supervisor for questions concerning safety.

Subject: Cordless Impact 'Motor' & Mechanism Noise and Lubrication
Affected Products: All Cordless Impacttools
Affected Date Range: All
Related Issue #: None

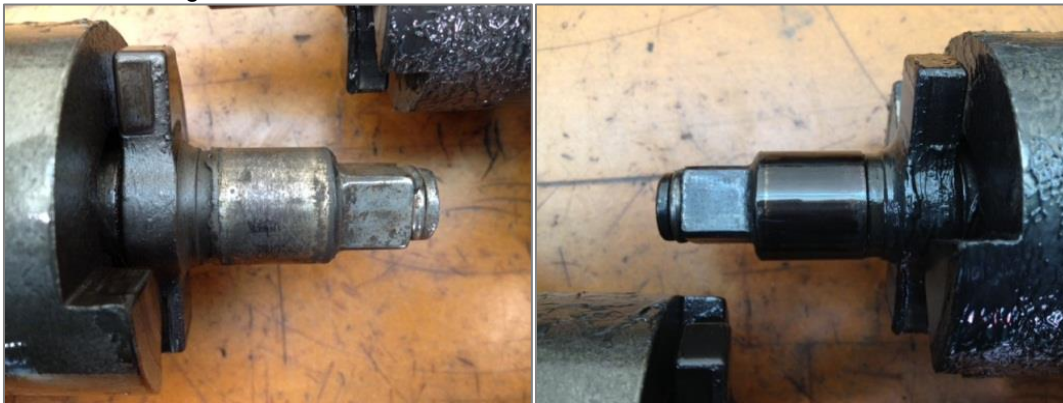
Issue Description:

Customer Complaint: Bad Motor/bad bearings. Tool will exhibit whining or groaning sound when it is running.
Cause: Insufficient impact mechanism lubrication.

Routine lubrication of the impact mechanism is required as a part of regular maintenance. If this maintenance is not performed, the hammer case bushing can become dry resulting in a whining or groaning sound while the tool is running.

Actions Required:

Remove hammer case and inspect anvil. In the photos below, the dry anvil is on the left and the correctly lubricated anvil is on the right:



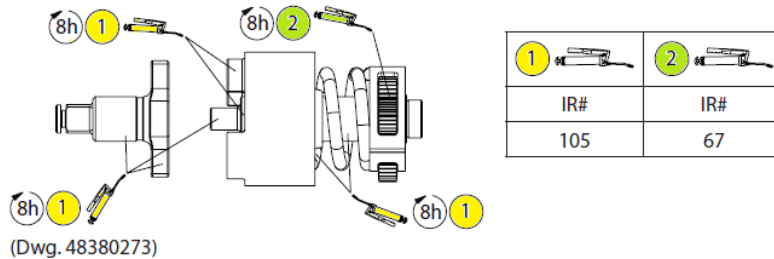
Dry – Lack of Lubrication

Correctly Lubricated

If anvil is found to be dry, clean and lubricate as instructed on page 1 of the Product Information manual (shown below). Apply IR 105 grease to the mechanism spring and anvil. Apply IR 67 Grease to the gears.

Lubrication

Remove hammer case to apply lubrication on the anvil, impact mechanism assembly and gears. Apply grease evenly and sparingly. An excessive accumulation of grease will result in sluggish operation. See drawing 48380273 and table below. Maintenance frequency is shown in a circular arrow and defined as h=hours, d=days, and m=months of actual use.



Disclaimer:

THE MATERIALS IN THIS SITE AND ANY LINKED THIRD-PARTY SITES ARE PROVIDED "AS IS" AND WITHOUT WARRANTIES OF ANY KIND EITHER EXPRESS OR IMPLIED. Ingersoll Rand does not warrant the accuracy or completeness of the materials or the reliability of any advice, opinion, statement or other information displayed or distributed through the site nor make any representations regarding the use or the results of the use of the materials in this site or in any linked third-party sites. TO THE FULLEST EXTENT PERMITTED BY LAW, Ingersoll Rand DISCLAIMS ALL WARRANTIES, EXPRESS OR IMPLIED, INCLUDING, BUT NOT LIMITED TO, IMPLIED WARRANTIES OF MERCHANTABILITY, NON-INFRINGEMENT, AND FITNESS FOR A PARTICULAR PURPOSE WITH RESPECT TO THIS SITE OR ANY LINKED THIRD PARTY SITE. SOME JURISDICTIONS DO NOT ALLOW FOR THE EXCLUSION OF IMPLIED WARRANTIES, SO THE ABOVE EXCLUSIONS MAY NOT APPLY TO YOU. You (and not Ingersoll Rand) assume the entire cost of all necessary maintenance, repair or correction resulting from your use. Ingersoll Rand reserves the right, in its sole discretion, to correct any errors or omissions in any portion of the site. Ingersoll Rand may make any other changes to the site, the materials and the products, programs or services described in the site at any time without notice. Before performing any service always follow applicable safety precautions. Consult company safety manual or supervisor for questions concerning safety. In no event shall Ingersoll Rand be responsible for any consequential, incidental, indirect, punitive or special damages related to this site nor the information contained in this bulletin.

Material Disposition:

None

Warranty Strategy:

This repair is not warrantable.

Additional Comments:

Routine lubrication of the impact mechanism is required as a part of regular maintenance. Refer to Page 1 of the Product Information manual for recommended lubrication practices and frequency.

Recommended 2nd Level Distribution:

Regional Ingersoll Rand Sales, Technical Support and Service personnel and applicable distributor service centers

For Additional Information:

Call or Email Ingersoll Rand Technical Support

United States: 800-483-4981

Email: irtechsupport@irco.com