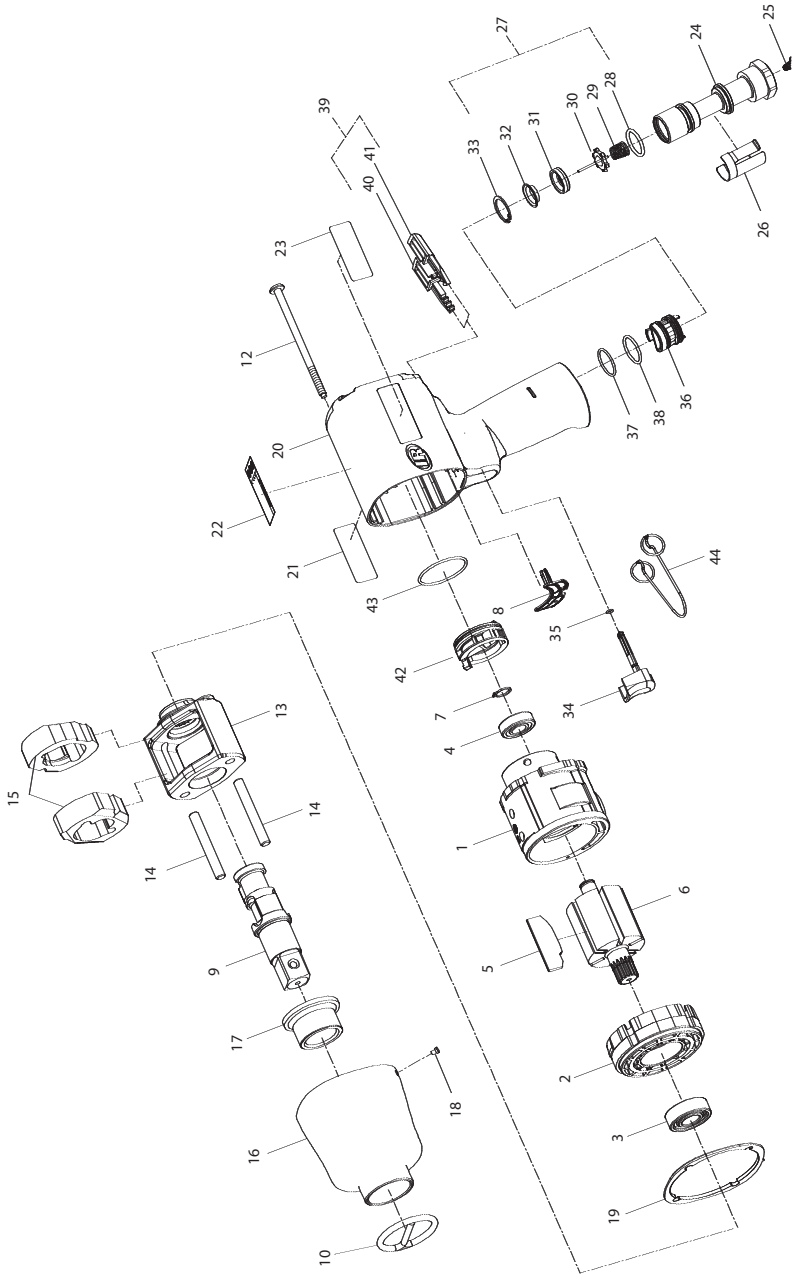


2141P, 2141PSP and 2151P1SP Air Impact Wrench Exploded - View



(Dwg. TPA1844)



04584066
Edition 3
October 2009

2141P, 2141PSP, and 2151P1SP Air Impact Wrench - Parts List

Item	Part Description	Part Number	Item	Part Description	Part Number
1	Cylinder	2141-3		Inlet Bushing Assembly	2141-D565
2	Front End Plate	2141-11B	24	Inlet Bushing	2141-565
3	Front Rotor Bearing	R38P-606	25	Inlet Bushing Screen	SRA-61
4	Rear Rotor Bearing	2131-97	26	Inlet Retainer Clip	2141-57
• 5	Vane Packet (set of 6 Vanes)	2141-42-6	27	Inlet Parts Kit	2141-K303
6	Rotor	2141-53	28	Inlet Parts Kit	R4-210
7	Rear Rotor Bearing Retainer	2131-6	29	Tilt Valve Spring	2131-51
8	Motor Gasket	2141-283	30	Tilt Valve	2141-302
9	Anvil		31	Tilt Valve Seat	2141-303
	for 2141P and 2141PSP	2141P-726	32	Tilt Valve Seat Support	2141-306
	for 2151P1SP	2151-726	33	Tilt Valve Retainer	SML8-24
• 10	Socket Retainer		• 34	Trigger Assembly	2141-A93
	for 2141P and 2141PSP	RR100345	35	Trigger O-Ring	2131-158
	for 2151P1SP	RR100155	36	Reverse Valve Assembly	2141-A329
12	Hammer Case Screw (4)	2141-638	37	Reverse Valve Assembly	2141-168
	Hammer Frame Assembly	2141-A703	38	Reverse Valve O-Ring (bottom) (blue)	2141-167
13	Hammer Frame	2141-703	39	Button Kit	2141-K75
14	Hammer Pin (2)	2141-704	40	Forward Button	---
15	Hammer (2)	2141-724	41	Reverse Button	---
16	Hammer Case Assembly		42	Power Management Dial	2131-A249
	for 2141P	2141-727	43	Power Management Dial Seal	PS3-42
	for 2141PSP	2141SP-727	44	Inlet Clip Removal Tool	2131-322
	for 2151P1SP	2151SP-727	*	ATEX Label	
17	Hammer Case Bushing			for 2141PSP and 2151P1SP	ATEX-IMPACTOOL-99
	for 2141P	2141-641	*	Grease (1 lb) (for external lubrication of the impact mechanism)	115-1LB
	for 2141PSP	2141SP-641	*	Grease (for lubrication when disassembling and assembling the impact mechanism)	
	for 2151P1SP	2151SP-641		1 lb	105-1LB
18	Grease Fitting	D0F9-879		8 lb	105-8LB
• 19	Hammer Case Gasket	2141-36	*	Protective Cover	2141-P32
20	Housing Assembly		*	Grease Gun	R000A2-228
	for 2141P	2141P-A40		Tune-up Kit (includes illustrated parts: 3, 4, 5, 7, 8, 19, 25, 27, 35, 37, 38 and 43)	2141-TK1
	for 2141PSP	2141PSP-D40			
	for 2151P1SP	2151P1SP-D40			
21	Housing Label				
	for 2141P	2141P-99			
	for 2141PSP	2141PSP-99			
	for 2151P1SP	2151P1SP-300			
22	Warning Label	WARNING-2-99			
23	Nameplate	2141-301A			

* Not illustrated.

• To keep downtime to a minimum, it is desirable to have on hand certain repair parts. We recommend that you stock one (pair or set) of each part indicated by a Bullet (•) for every four tools in service.

Parts and Maintenance

When the life of the tool has expired, it is recommended that the tool be disassembled, degreased and parts be separated by material so that they can be recycled.

Tool repair and maintenance should only be carried out by an authorized Service Center. Refer all communications to the nearest **Ingersoll Rand** Office or Distributor.

Related Documentation

For additional information refer to:

Air Impact Wrench Product Safety Information Manual 04580916.

Air Impact Wrench Product Information Manual 04584710.

Air Impact Wrench Maintenance Information Manual Form 04584058.

Manuals can be downloaded from www.ingersollrandproducts.com



www.ingersollrandproducts.com
© 2009 **Ingersoll Rand** Company

04584066
Edition 3
October 2009